

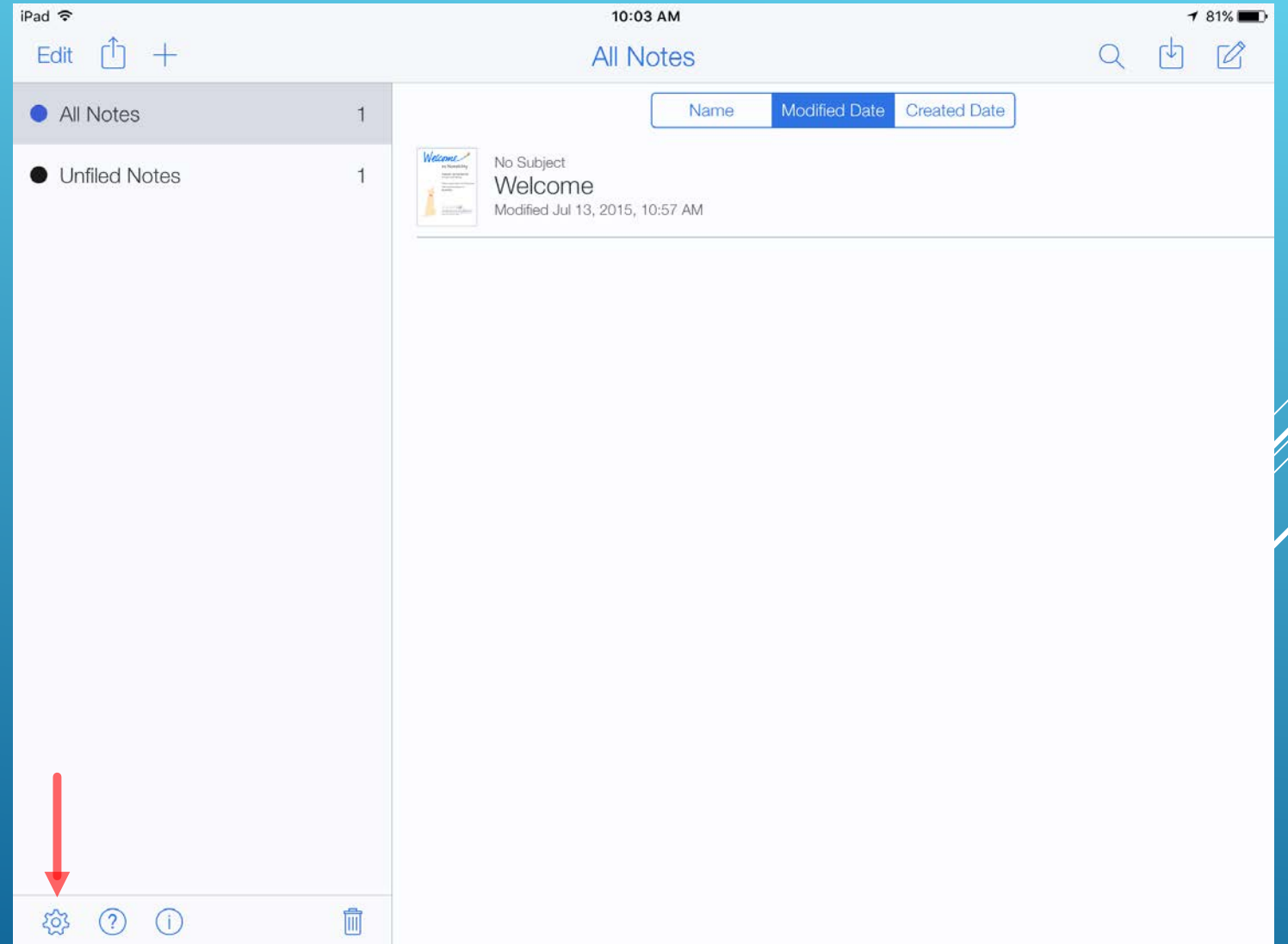
BACKING UP NOTABILTY TO GOOGLE DRIVE



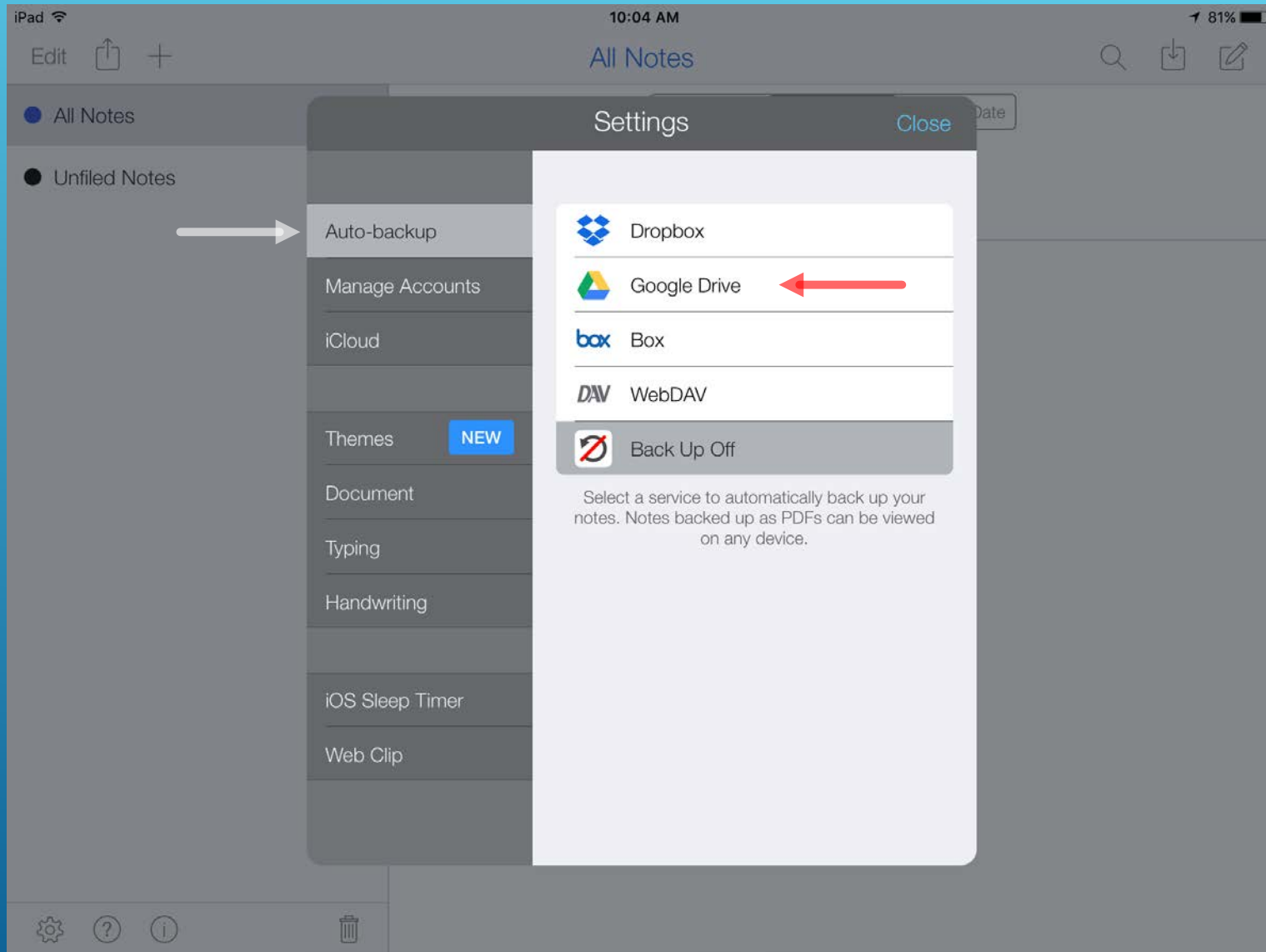
1. Open up Notability



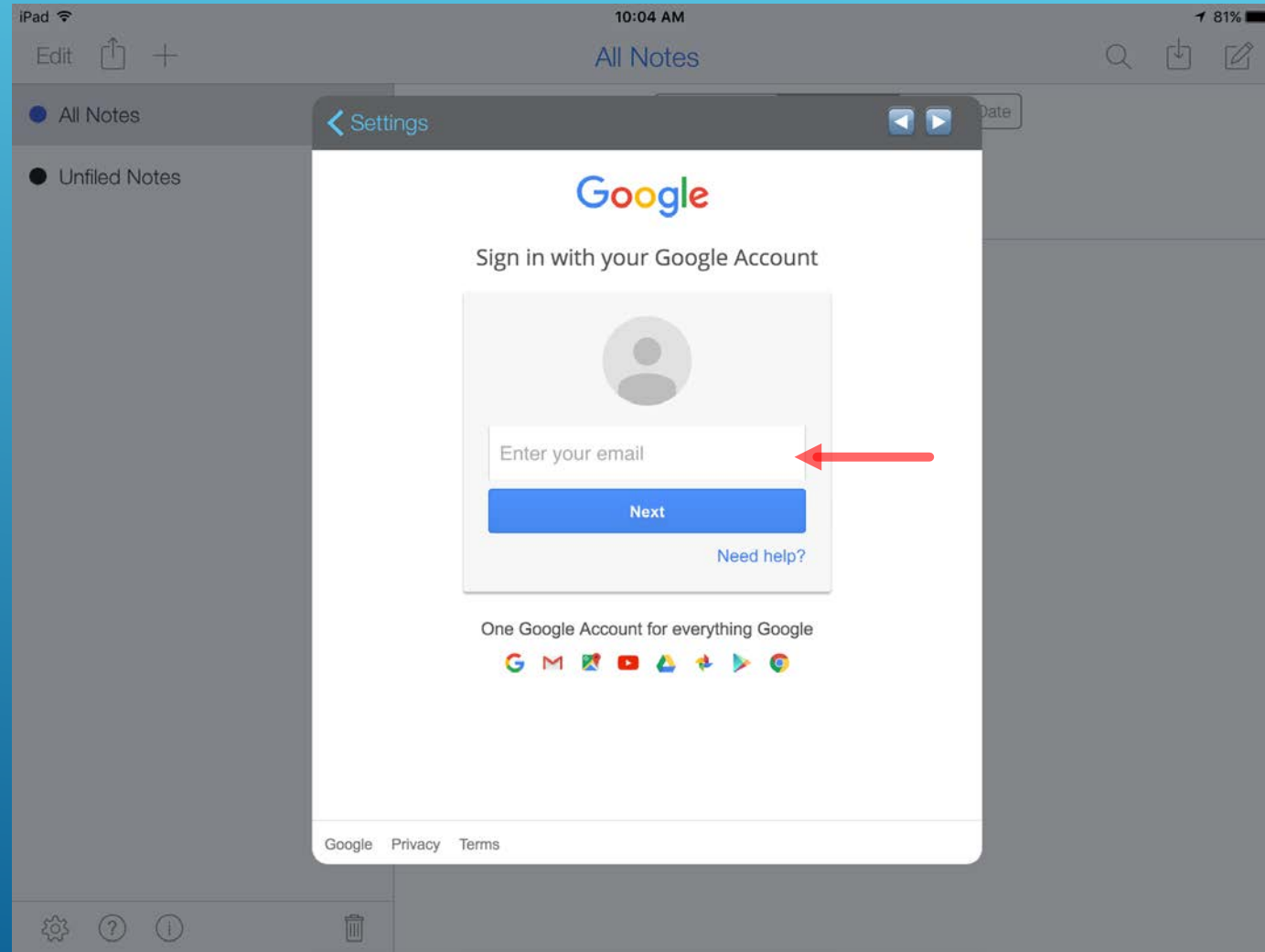
2. Tap on the gear icon in the bottom left



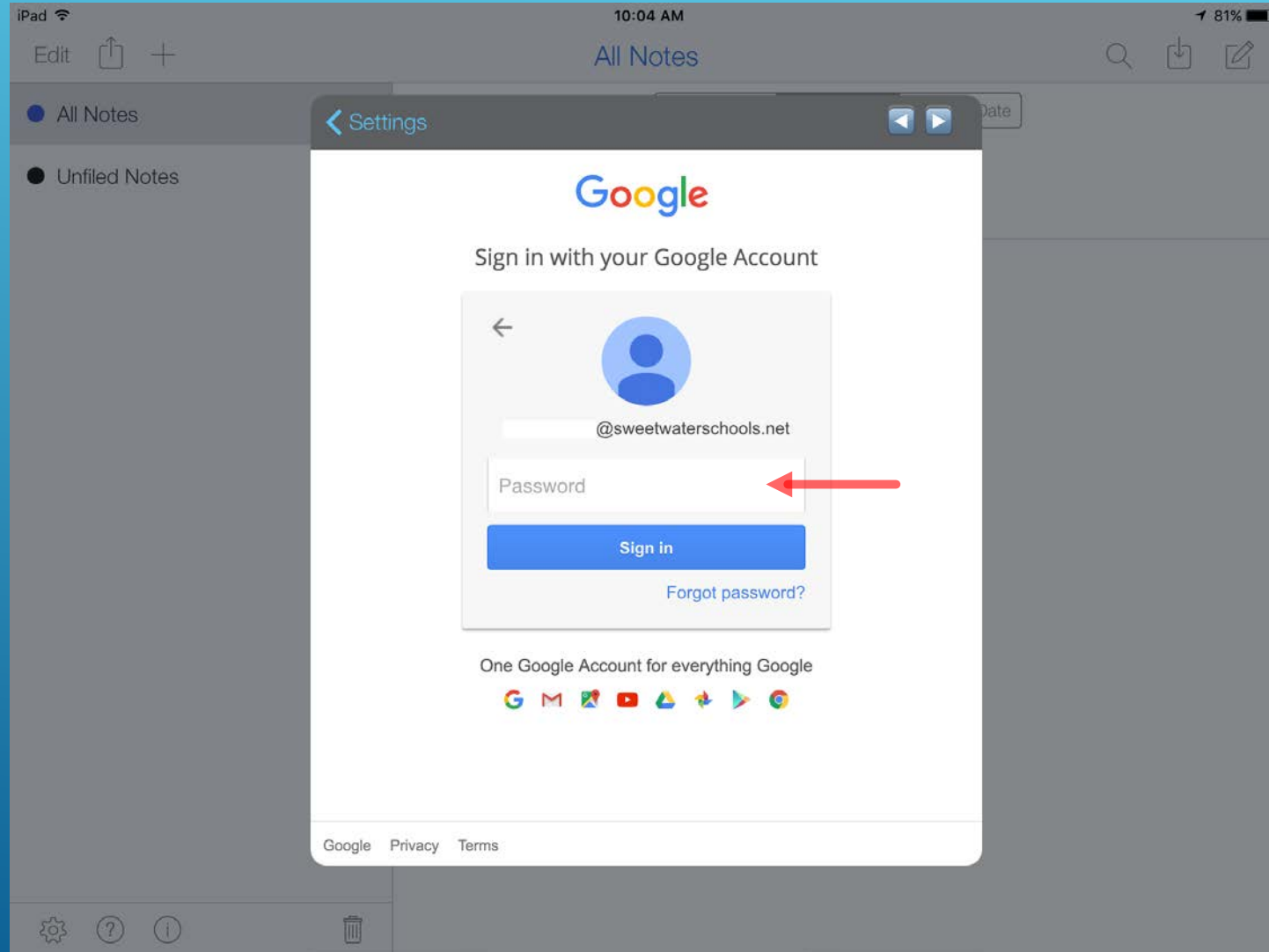
3. Tap on Auto-backup, then tap on Google Drive



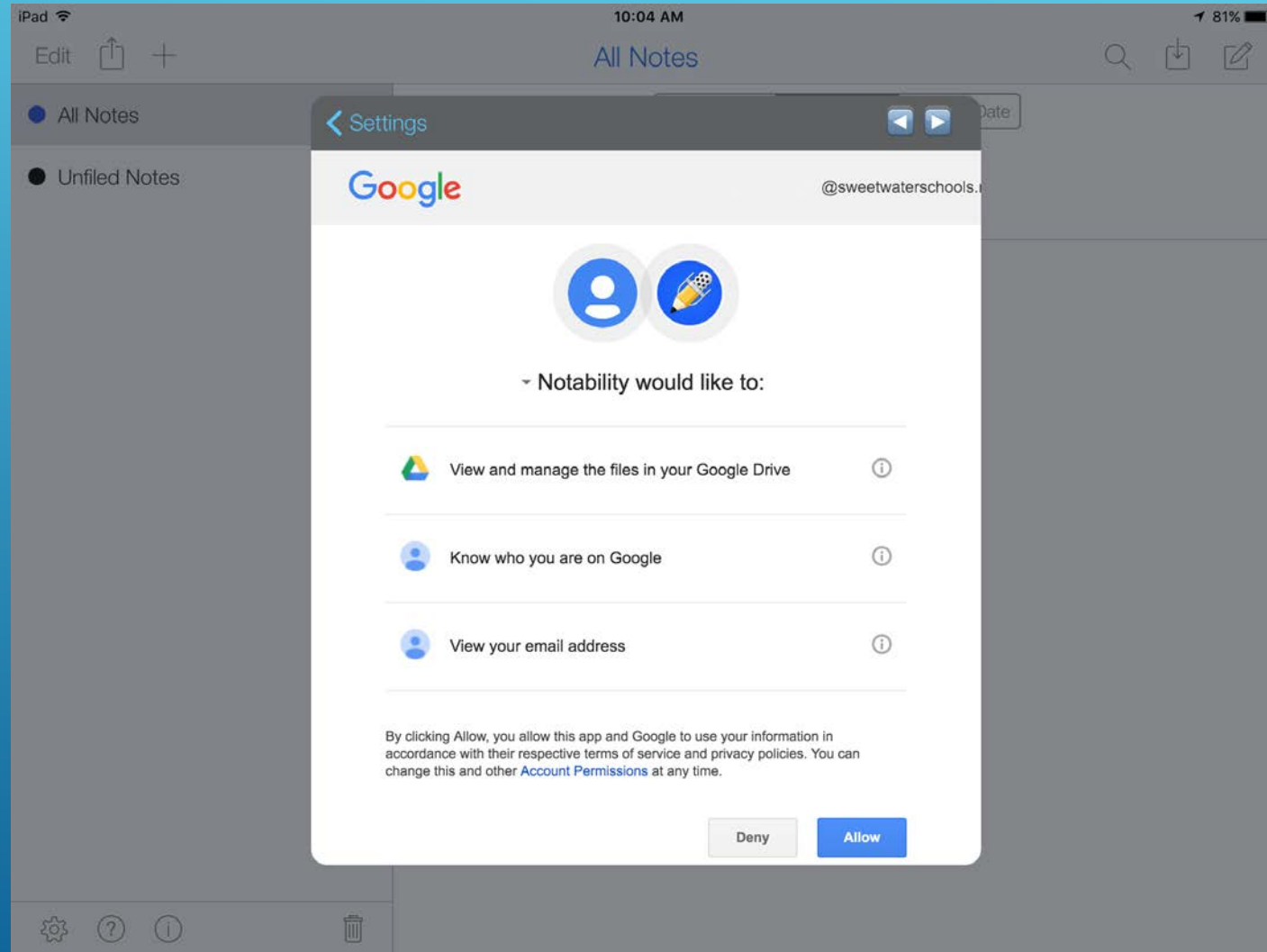
4. Enter your district Gmail



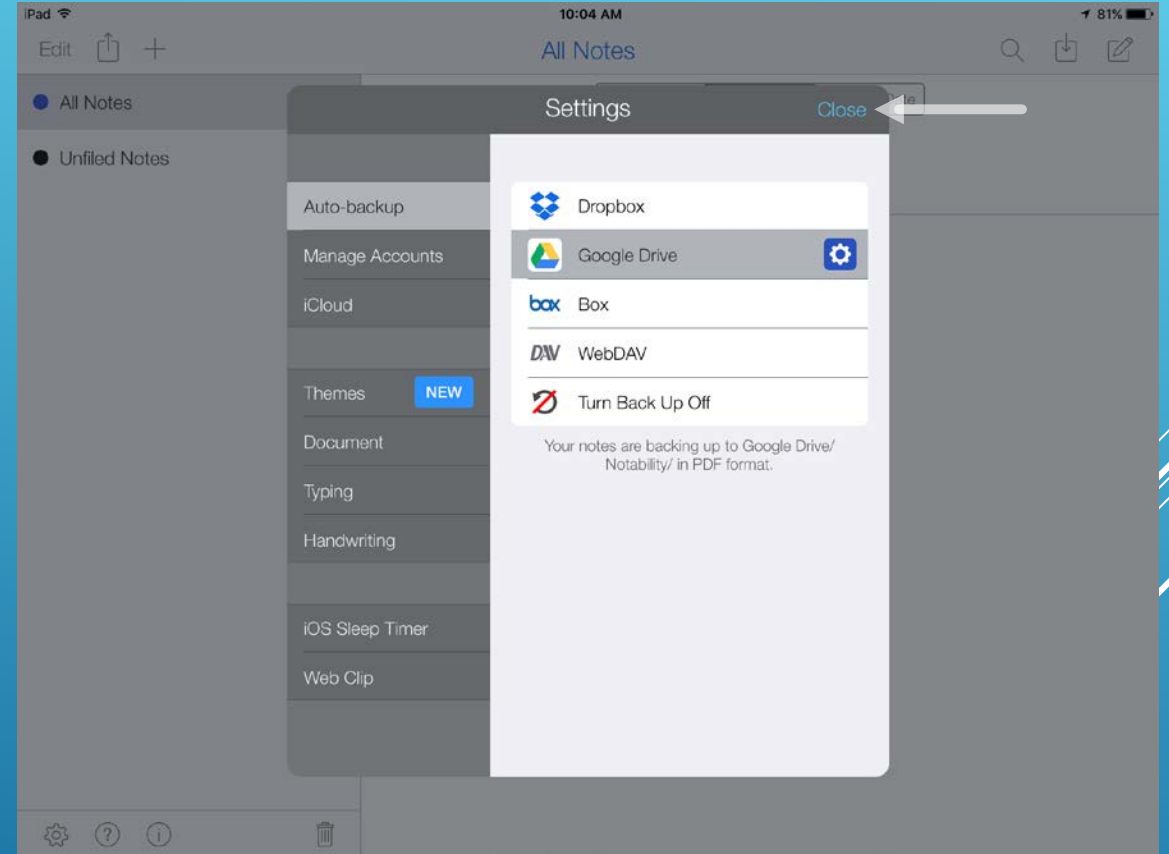
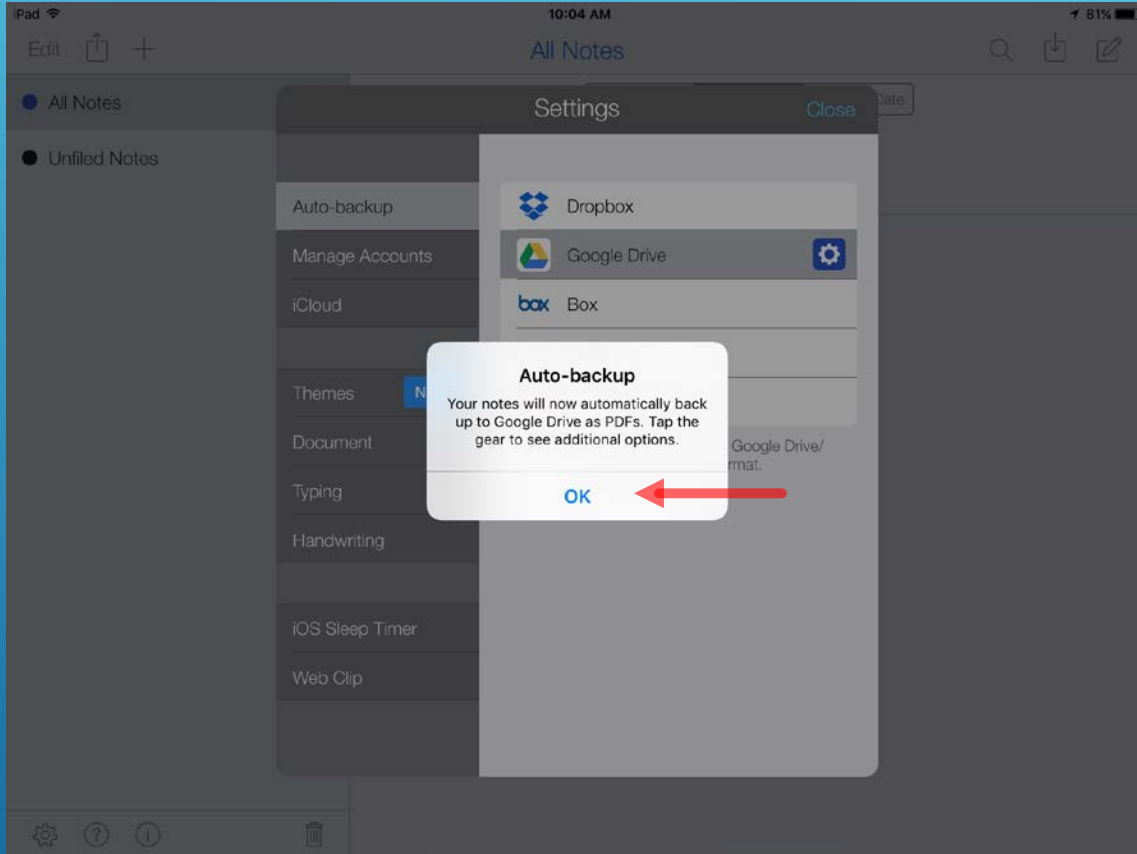
5. Enter your Gmail password, which should be your 8-digit birthday, and tap Sign in.



6. Tap Allow



7. Tap OK, then Close



8. You should see Notability backing up in the bottom left.

